



Usa el modelo visual para resolver cada problema.

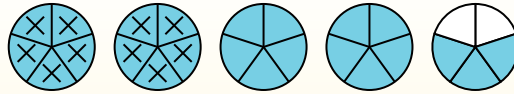
$4 \frac{3}{5} - 2 \frac{4}{5} = ?$

Para resolver un problema de resta de fracciones, una estrategia es sombrear

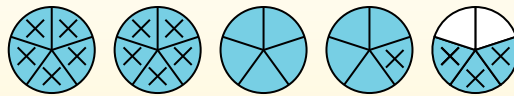
primero la cantidad inicial ($4 \frac{3}{5}$)



Em seguida, marque os inteiros (2).



Finalmente, marque la fracción $\frac{4}{5}$.



Ahora podemos ver que $4 \frac{3}{5} - 2 \frac{4}{5} = 1 \frac{4}{5}$

Respuestas

1. _____
2. _____
3. _____
4. _____
5. _____
6. _____
7. _____
8. _____
9. _____
10. _____

1) $6 \frac{2}{3} - 3 \frac{1}{3} =$

2) $6 \frac{6}{8} - 2 \frac{2}{8} =$

3) $5 \frac{1}{3} - 1 \frac{1}{3} =$

4) $5 \frac{3}{4} - 2 \frac{3}{4} =$

5) $4 \frac{6}{10} - 2 \frac{4}{10} =$

6) $5 \frac{2}{8} - 1 \frac{4}{8} =$

7) $3 \frac{7}{8} - 1 \frac{5}{8} =$

8) $6 \frac{1}{8} - 4 \frac{7}{8} =$

9) $3 \frac{2}{5} - 1 \frac{4}{5} =$

10) $7 \frac{1}{8} - 1 \frac{4}{8} =$



Usa el modelo visual para resolver cada problema.

$$4 \frac{3}{5} - 2 \frac{4}{5} = ?$$

Para resolver un problema de resta de fracciones, una estrategia es sombrear

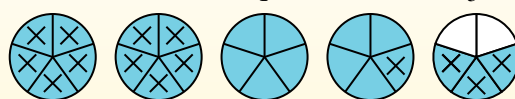
primero la cantidad inicial ($4 \frac{3}{5}$)



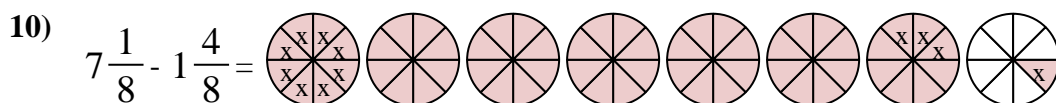
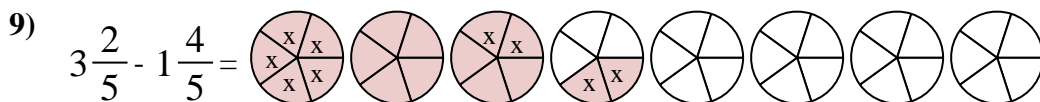
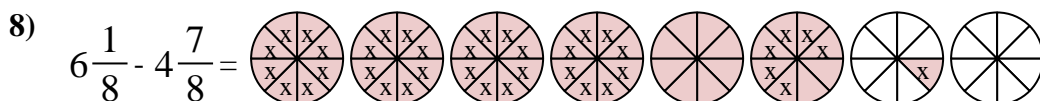
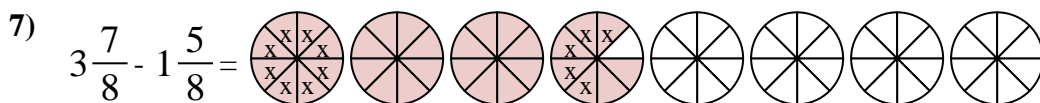
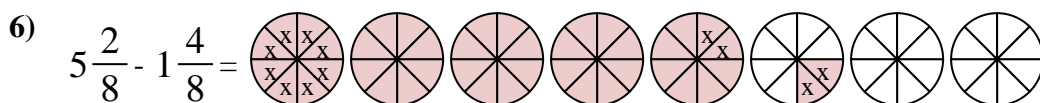
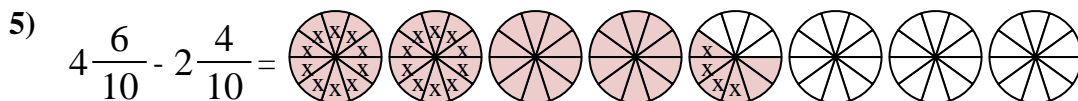
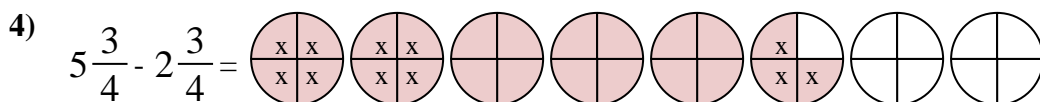
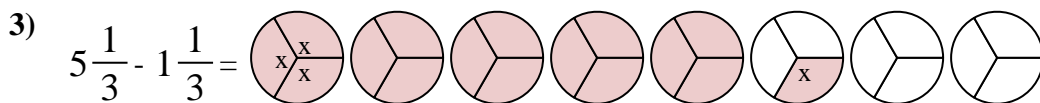
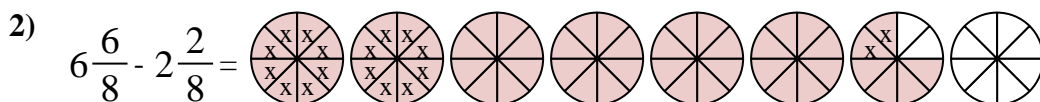
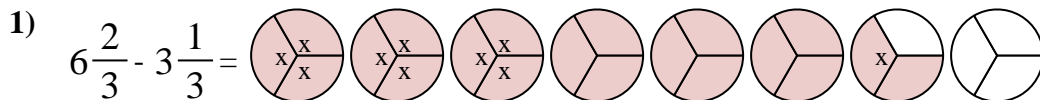
Em seguida, marque os inteiros (2).



Finalmente, marque la fracción $\frac{4}{5}$.



Ahora podemos ver que $4 \frac{3}{5} - 2 \frac{4}{5} = 1 \frac{4}{5}$



Respuestas

1. $3 \frac{1}{3}$

2. $4 \frac{4}{8}$

3. $4 \frac{0}{3}$

4. $3 \frac{0}{4}$

5. $2 \frac{2}{10}$

6. $3 \frac{6}{8}$

7. $2 \frac{2}{8}$

8. $1 \frac{2}{8}$

9. $1 \frac{3}{5}$

10. $5 \frac{5}{8}$