



Dibuje la manecilla de las horas y los minutos en el reloj para que represente la hora mostrada.

1) 12:00



2) 9:15



3) 8:00



4) 2:00



5) 10:15



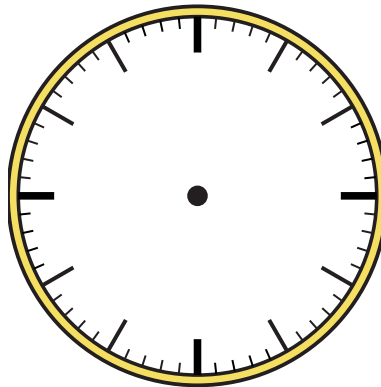
6) 4:30



7) 5:30



8) 11:30



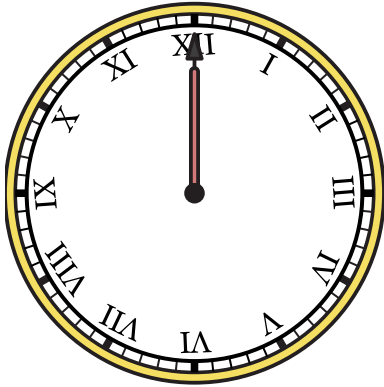
9) 9:45



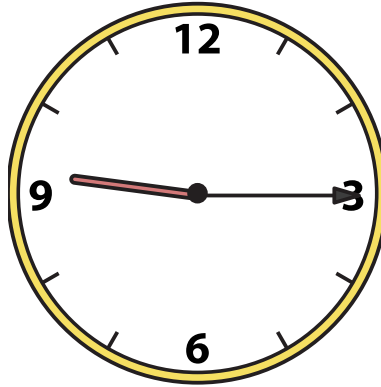


Dibuje la manecilla de las horas y los minutos en el reloj para que represente la hora mostrada.

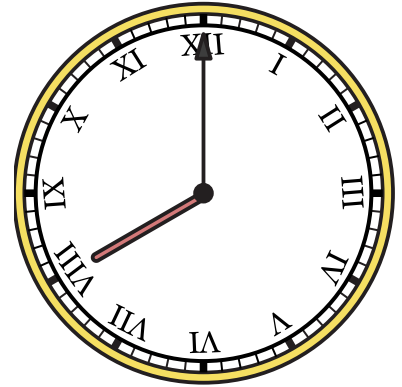
1) 12:00



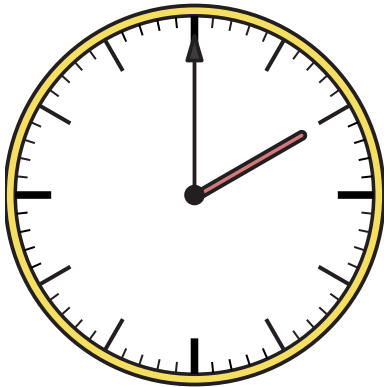
2) 9:15



3) 8:00



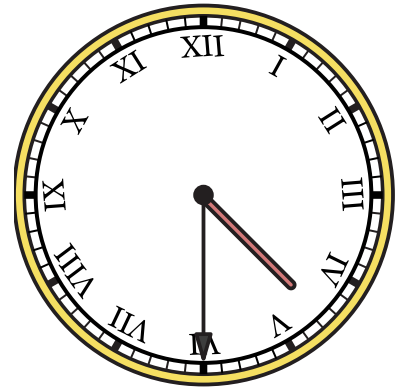
4) 2:00



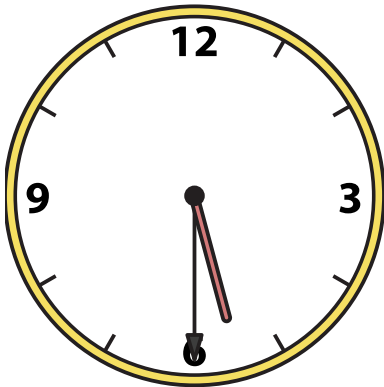
5) 10:15



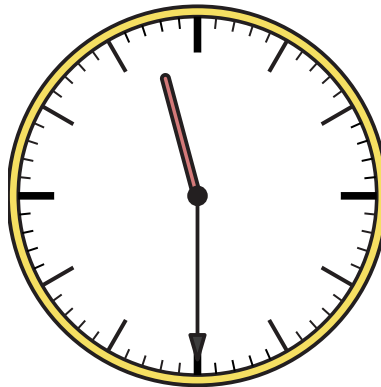
6) 4:30



7) 5:30



8) 11:30



9) 9:45

