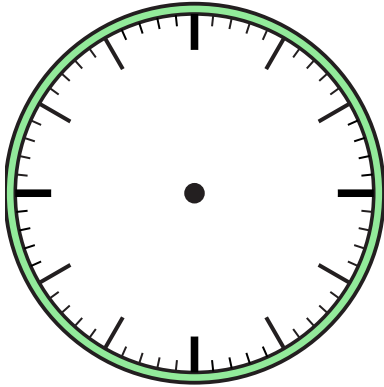




Dibuje la manecilla de las horas y los minutos en el reloj para que represente la hora mostrada.

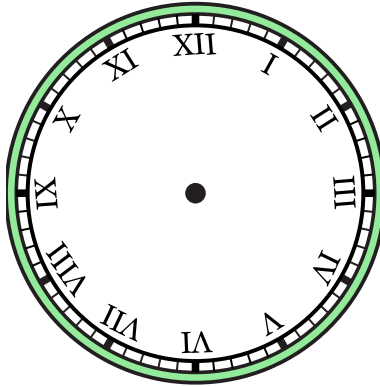
1)

2:00



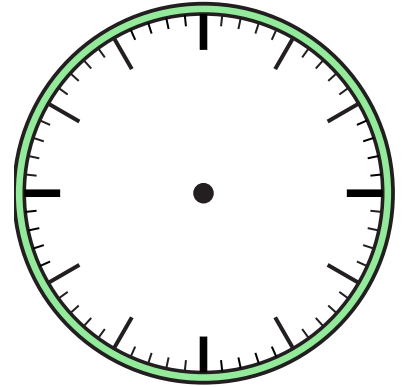
2)

2:30



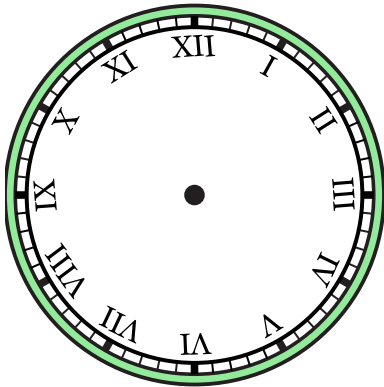
3)

6:00



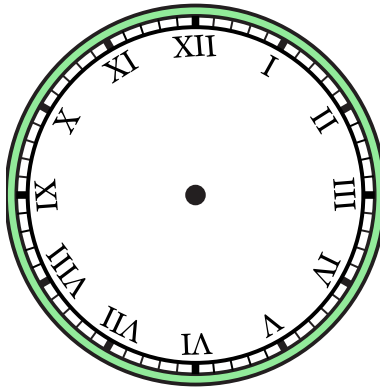
4)

8:30



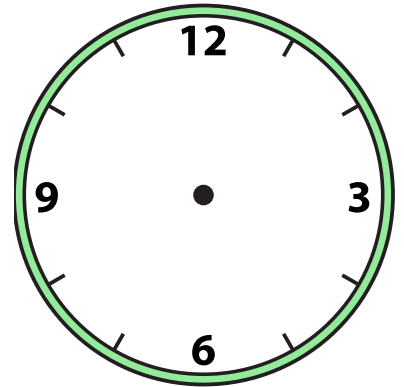
5)

11:30



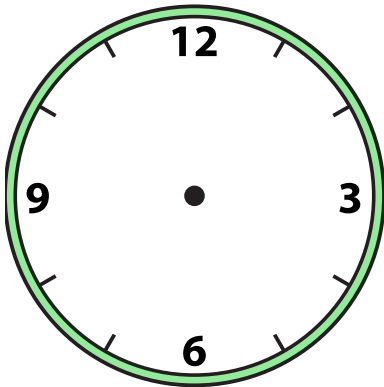
6)

6:30



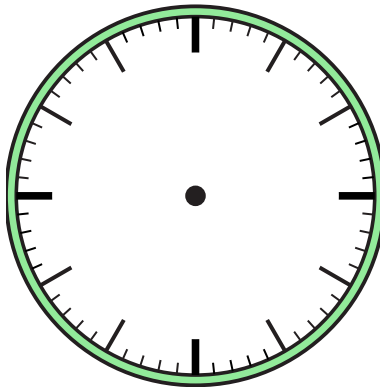
7)

12:30



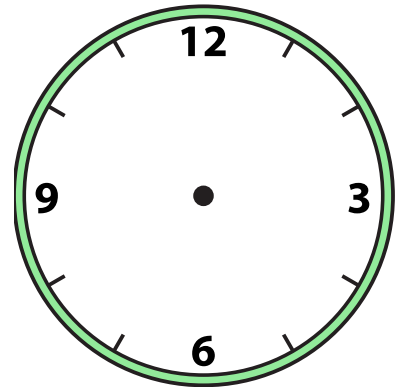
8)

10:30



9)

4:30



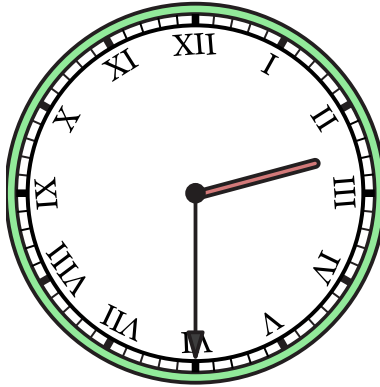


Dibuje la manecilla de las horas y los minutos en el reloj para que represente la hora mostrada.

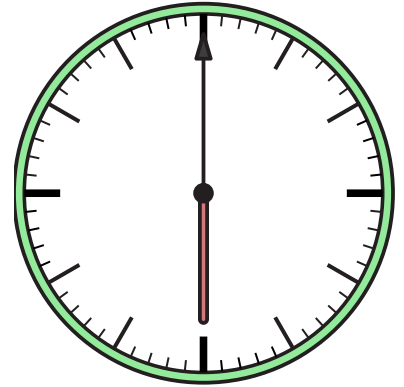
1) 2:00



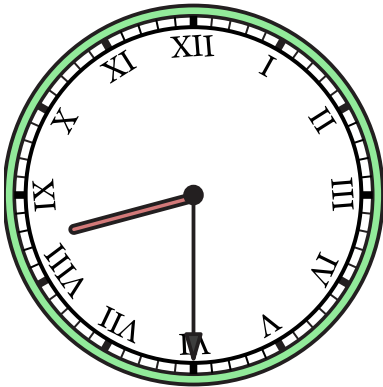
2) 2:30



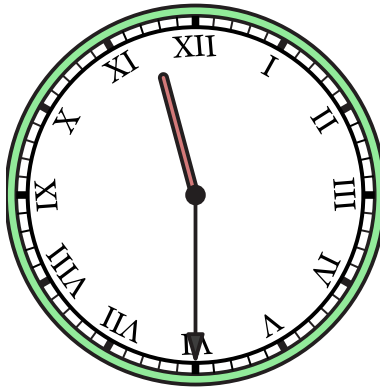
3) 6:00



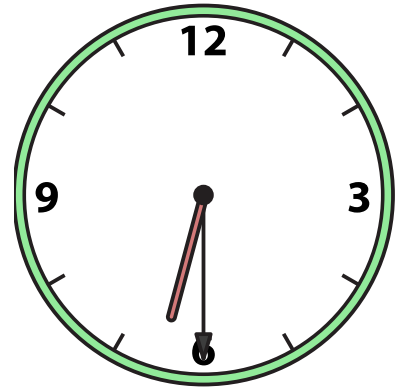
4) 8:30



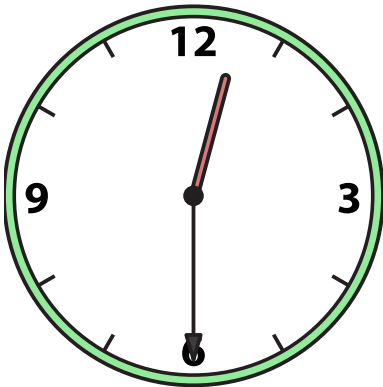
5) 11:30



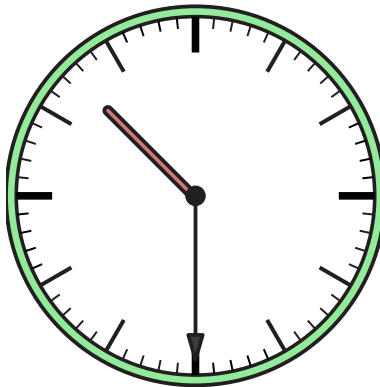
6) 6:30



7) 12:30



8) 10:30



9) 4:30

